

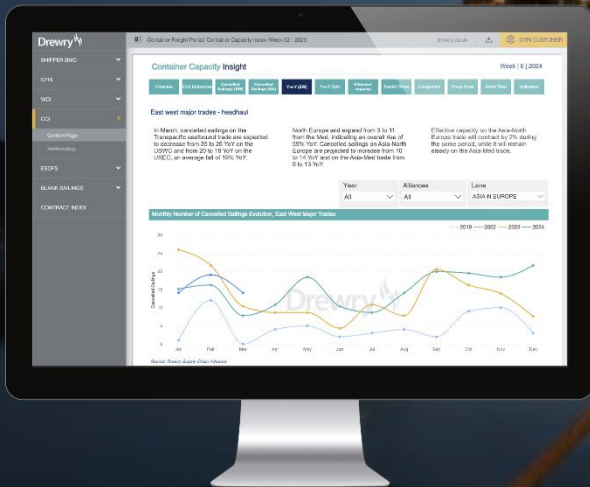
Feb '24. Now includes interactive online service

Drewry Container Capacity Insight

Powered by Drewry AIS

(Annual subscription: \$2,100)

Weekly PDF Insight reports, data Annexes in Excel and access to 'interactive' online service via Drewry Container Freight Portal



Comprehensive weekly analysis of cancelled sailings, effective capacity and key operational metrics across the main E-W trades lanes



Annual subscription: \$2,100

Weekly analysis of port congestion, transit times and cancelled vs scheduled sailings, based on schedules published by the world's major ocean container carriers and alliances.

With carriers continuing to carefully adjust their schedules to meet demand, access to a regularly updated picture of container capacity and service availability is more important than ever.

As well as AIS data, we closely analyse service and schedule data feeds to understand current container capacity and market development - by alliance across the main trades.

To provide a historical context year-on-year comparisons are included in the weekly analysis.

Weekly PDF Insights, Annexes in Excel and access to interactive online service

1 Analysis across the major trades

Within each weekly Container Capacity Insight report, we analyse major East-West service schedules to provide a **“5-week”** forward picture of anticipated market development for the following main trades (headhaul):

- Transpacific Eastbound, Asia-North Europe & Mediterranean, South Asia-North Europe & Mediterranean, Transatlantic Westbound
- Infographic/global map of the container market forecast (for next month) including capacity and spot rate fluctuations, as well as cancelled vs scheduled sailings).

2 Regional port congestion and transit time assessment

- Assessment and trend analysis
- Port congestion assessment for 7 regions ('Z' Scores for high and medium volume ports, based on the number of vessels waiting for a berthing window and Port congestion comparison between neighbouring ports (powered by Drewry AIS analysis)

3 Cancelled sailings weekly forward outlook

Weekly analysis for each of the above four main trade lanes:

- Transpacific Eastbound
- Asia-North Europe & Mediterranean
- South Asia-North Europe & Mediterranean
- Transatlantic Westbound

4 Year-on-year analysis

5 CO2 emissions, Utilisation and Dwell time

FAST FACTS:

Port congestion and trend analysis

Cancelled vs scheduled sailings

Analysis by trade route and alliance

Carriers CO2 emissions, Utilisation and Dwell time

Weekly .pdf updates (52 per annum)

All data, tables and charts also provided in Excel

Each weekly report accompanied by MS Excel data sheets

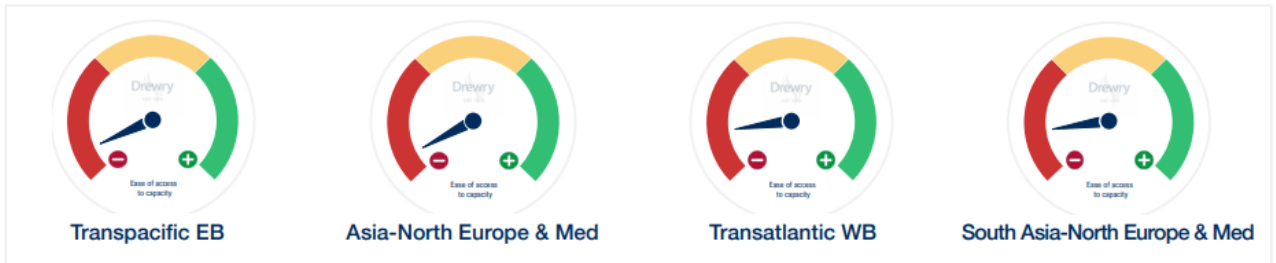


1. List of the cancelled vessels, including name of the ships, capacity, operator and routing
2. Weekly cancelled and scheduled sailings over 17 weeks, including 4 coming weeks
3. Year-on-year monthly cancelled sailings by trade lane and alliance

Section 1 CONTAINER MARKET FORECAST

'Ease of access to capacity' indicators headhaul (latest assessment for next 4 weeks) for the following trade lanes:

- Transpacific Eastbound, Asia-North Europe & Mediterranean, Transatlantic Westbound and South Asia-North Europe & Mediterranean



Section 2 CO2 EMISSIONS

- Average CO2 emissions by trade lane (E-W) vs best carrier
- Most eco-friendly carrier by trade lane (E-W)
- Updated quarterly

Section 3 CANCELLED SAILINGS

Weekly forward outlook by main trade lane:

- Transpacific Eastbound
- Asia-North Europe & Mediterranean
- Transatlantic Westbound
- South Asia-North Europe & Mediterranean

Includes spot rate development for each trade lane (sources: WCI or CFRI)

Section 4 YEAR-ON-YEAR ANALYSIS

- Evolution of cancelled sailings (headhaul) across each main trade lane
- Anticipated change in headhaul effective capacity for the next month, by trade lane and by carrier, as well as year-on-year comparison

Section 5 BEST CASE TRANSIT TIMES

Assessment of best case transit times with historical comparison

- Last port in Asia and first port in WCNA
- Last port in South East Asia and first port in North Europe
- Comparison of current year vs previous and vs long term trend

Section 6 PORT CONGESTION

Port congestion trend analysis

- Port Congestion 'Z' Scores for high and medium volume ports, based on the number of vessels waiting for a berthing window (AIS analysis)
- Port congestion comparison between neighbouring ports.

Section 7 DWELL TIME

- Trend analysis of import container dwell times at major ports

Section 8 UTILISATION

- Year-on-year analysis of utilisation trends across the major East-West trade lanes



[Download an example weekly report](#)

FEATURES

- ✓ Includes latest alliance schedule data feeds and AIS analysis of port congestion
- ✓ Global map visual of the container market forecast for the next month; change in spot rates, change in effective capacity, cancelled vs scheduled sailings
- ✓ A weekly 'forward analysis' of cancellations for each main trade; Transpacific Eastbound, Asia-North Europe and Mediterranean, Transatlantic Westbound and South Asia-North Europe & Mediterranean
- ✓ Regional port congestion and transit time analysis with year-on-year trend comparison
- ✓ Ease of access to capacity indicators (anticipating capacity on each of the 4 main trade routes over the next 4 weeks)
- ✓ List of the cancelled vessels, including name of the ships, capacity, operator and routing
- ✓ Weekly cancelled and scheduled sailings over 17 weeks, including 5 coming weeks
- ✓ Year-on-year monthly cancelled sailings by trade lane and alliance
- ✓ Import Dwell Time at selected ports and Utilisation indices spanning major East-West trade routes
- ✓ Comprehensive analysis on carriers CO2 emissions

Weekly PDF Insights, Annexes in Excel and access to new interactive online service via Drewry's Container Freight Portal



“Having a regularly updated picture of service availability is more important than ever.”

Preferential terms available to subscribers of our Benchmarking Club and Container Freight Rate Insight service.

CONTACT US FOR AN EVALUATION REPORT

supplychains@drewry.co.uk

UK

35-41 Folgate Street
London
E1 6BX
United Kingdom
T +44 20 7538 0191

INDIA

4th Floor, Tower C
Urban Square
Sector 62, Gurugram
122098 India
T +91 124 497 4979

SINGAPORE

#17-01 Springleaf Tower
No 3 Anson Road
Singapore 079909
T +65 6220 9890

CHINA

Unit D01, Level 10,
Shinmay Union Square
Tower 2, 506 Shangcheng Rd
Pudong, Shanghai 200120
T +86 21 5081 0508